



## East Coast Model

Step into our delightful two-bedroom monopitch East Coast model. Featuring a central living area, 2 bedrooms, and 1.5 bathrooms, this cozy retreat is designed for comfort and style.

The kitchen and dining area are situated at the rear, while the living space and bedrooms seamlessly connect to the charming covered veranda. Bedroom 1 features a walk-in wardrobe.

Looking to enhance your outdoor experience? Choose from options for a rear deck to elevate your relaxation space.

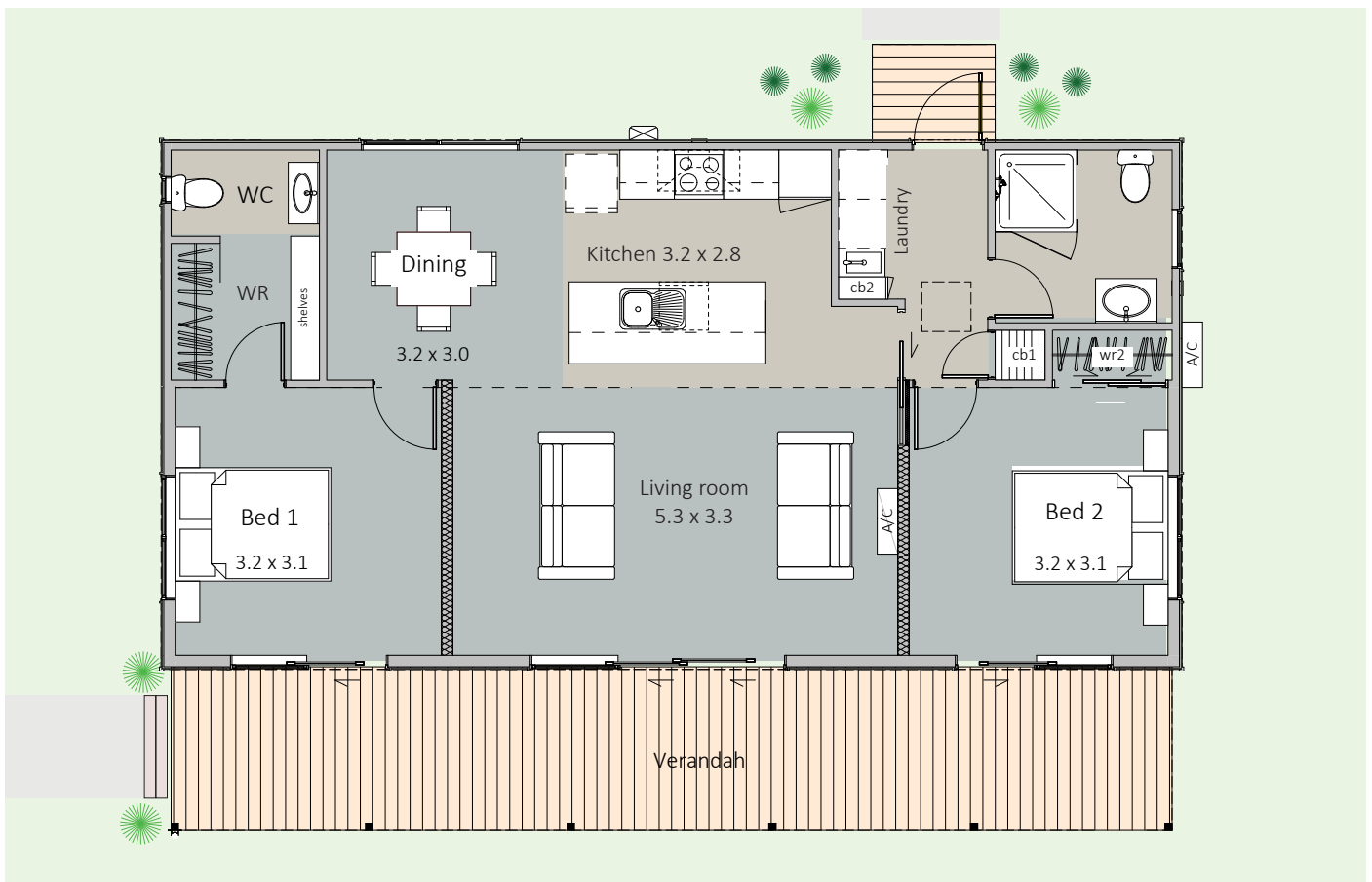
|              |  |
|--------------|--|
| BEDROOMS     | 2  |
| BATHROOMS    | 1.5  |
| FLOOR SIZE   | 80m <sup>2</sup>                                     |
| LENGTH       | 12.4m  |
| WIDTH        | 8.4m   |
| ROOF OPTIONS | monopitch roof                                       |
| SUITABLE FOR | first home, rental, secondary dwelling, holiday home |

*\* Price and specifications subject to change*

**Come & see us at**  
1139 Maraekakaho Road  
Longlands, Hastings

P. +64 6 870 8979  
E. office@hbhomes.nz  
W. www.hbhomes.nz





## SPECIFICATIONS:

### INTERIOR

- Insulation to floor, wall and ceiling
- Shower
- 2x WCs
- Vanities
- Gas water heating
- Kitchen as shown
- Wardrobe shelving
- Gib system interior wall lining
- Electrical fit-out completed
- Internal doors and hardware
- Painted interior
- Floor coverings
- Fisher & Paykel appliances as specified
- Daikin heat pump

### EXTERIOR

- Colorsteel Endura roofing
- 12mm Shadowclad Ultra groove
- Colorsteel quadrant spouting
- Powdercoated aluminium double glazed windows & doors
- Treated #1 PR decking
- Painted exterior

### PRICE EXCLUDES

- Window dressings (blinds, curtains)
- Geotech, delivery, foundations & site installations (*site specific*)
- LTA fees, site consents, new connections & contributions (*site specific*)

### OPTIONS AVAILABLE

- Alternative exterior linings
- Alternative Bespoke kitchen options
- Alternative bathroom options
- Extra heatpumps, fire place and DVS systems
- Different deck options and sizes available